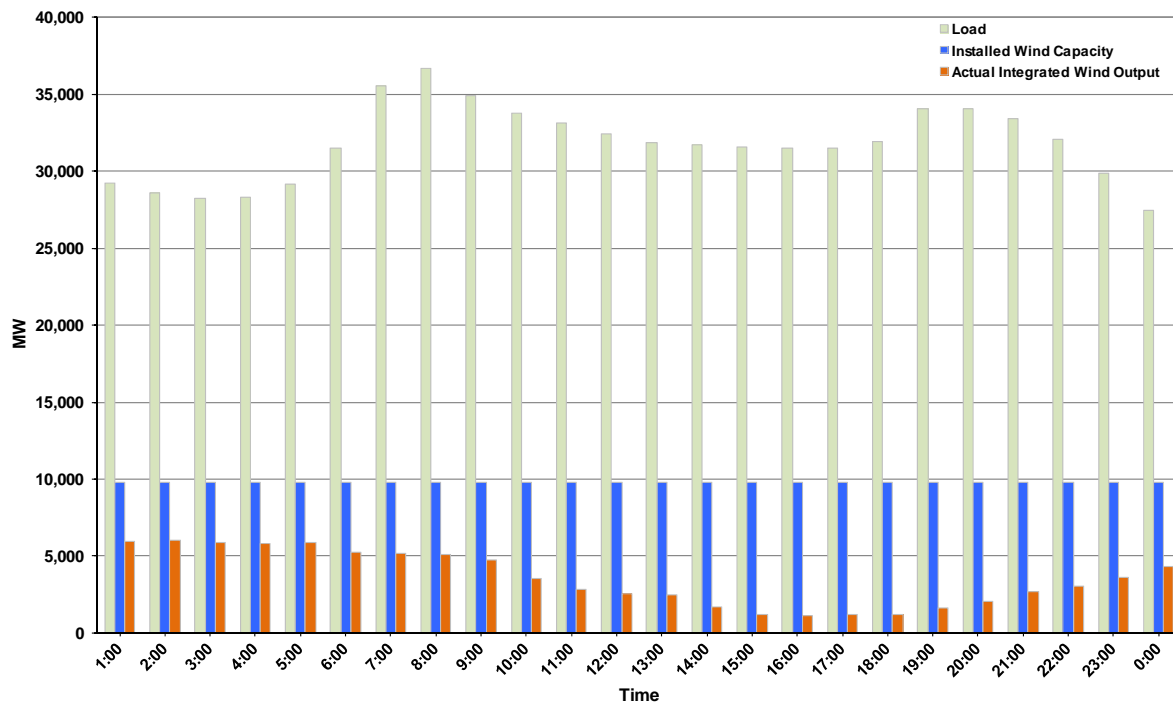




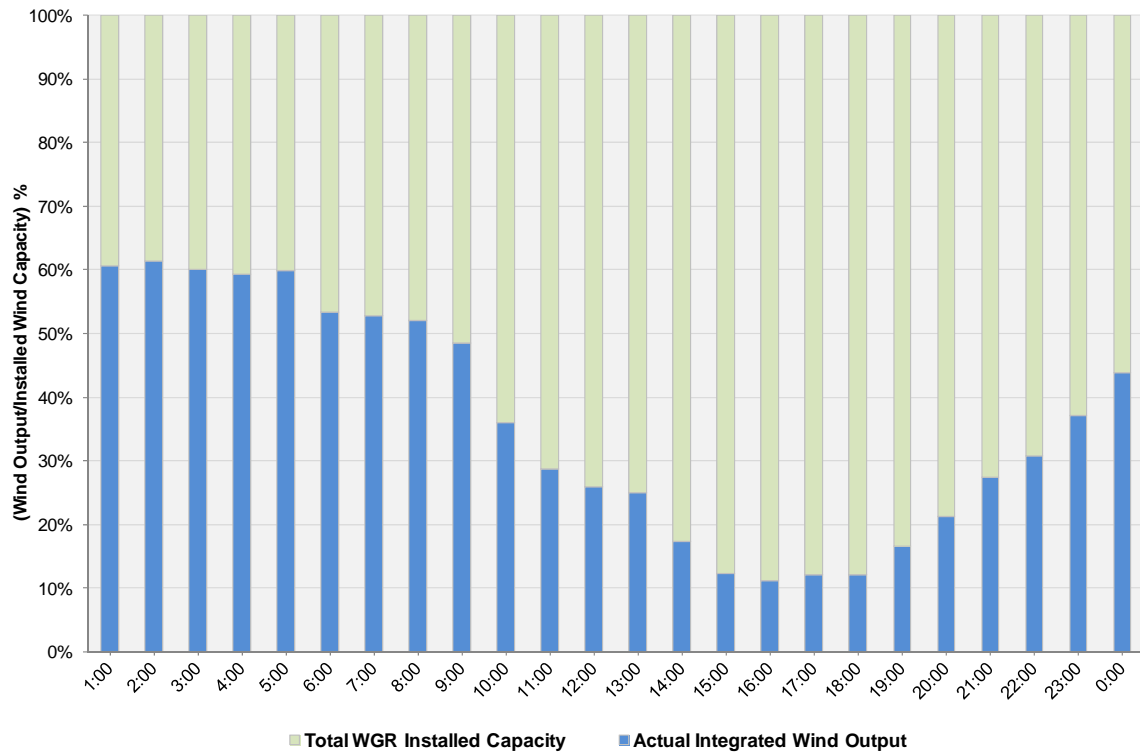
## ERCOT Grid Operations Wind Integration Report: 01/19/12

Peak Load	36,643 MW
Load Peak Hour (HE)	08
Wind over Peak	5,101 MW
Wind Record 10/07/11	7,400 MW
Max Wind Value	6,100 MW
Wind Peak Time	00:55
Wind Integration %	21.09%

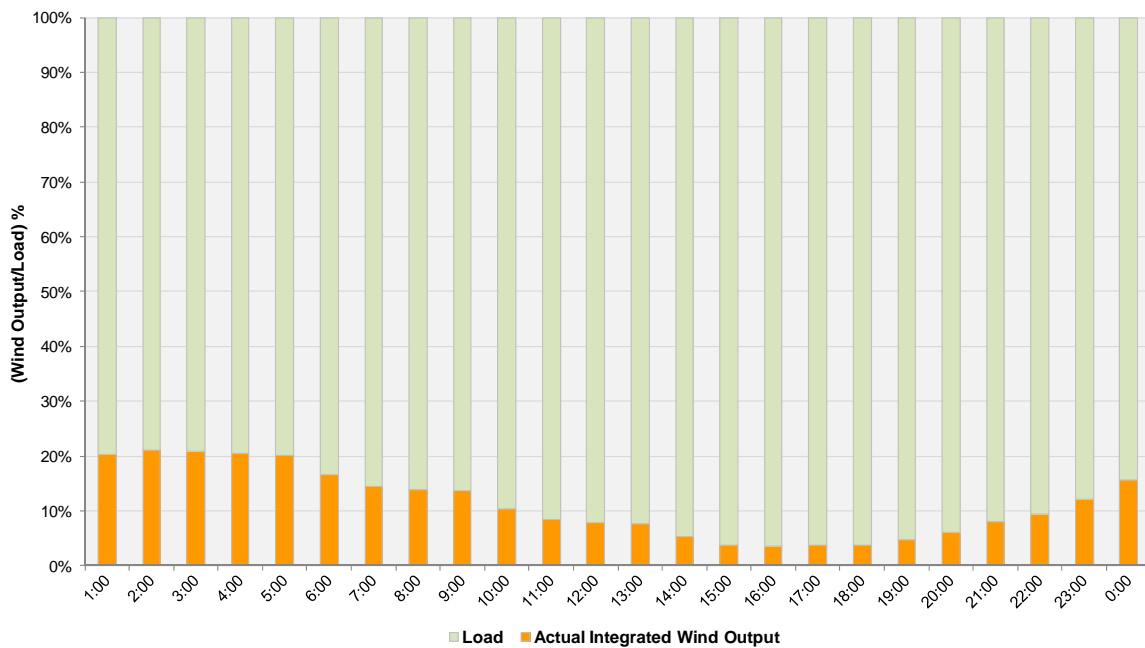
Hourly Average Actual Load vs. Actual Wind Output  
01-19-2012



**Actual Wind Output as a Percentage of the Total Installed Wind Capacity**  
**01-19-2012**



**Actual Wind Output as a Percentage of the ERCOT Load**  
**01-19-2012**



ERCOT Load vs. Actual Wind Output 1/12/2012 - 1/19/2012

